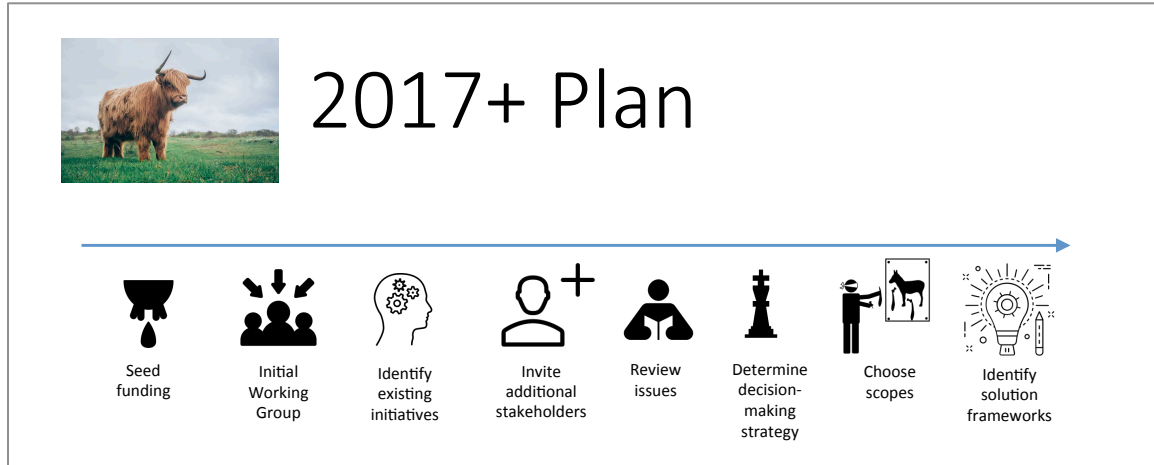


# TE Leather Work Plan

The following is an initial outline of the work we will do to understand and address issues in the leather supply chain. This will start as an open, investigative process to understand the needs of the industry and what is already available. The goal is that by the end of 2017 we will have a clear idea of the type of solution that is needed, then in 2018 we will start the work to make it happen.



## Seed funding

We are asking for some initial financial support to help get this work started. Financial contributions are not a requirement for group participation, but there are certainly welcome! Please contact [Alexandre@TextileExchange.org](mailto:Alexandre@TextileExchange.org) if this is a possibility.

## Create an initial working group

We will organize the list of stakeholders that we currently have into initial working groups, striving to create a balance of industry sectors, geographies and reflecting people's capacity for engagement.

## Identify existing initiatives

We will use our stakeholders and do additional research to identify what work is already being done with regards to the issues we will be focusing on.

## Identify and invite additional stakeholders

As we identify initiatives and expand our network, we will bring in additional stakeholders to create a balanced International Working Group (IWG).

## Review issues to be addressed

We have already collected a lot of input on the issues that exist in the supply chain, and that people want to have addressed. We will review and discuss these, and try to narrow down where our focus should be.

**Determine strategy for setting priorities**

The greatest challenge of this initiative will be to determine which of the many issues in the supply chain we work on first. It will be impossible to take them all on at once, and there will likely be a wide range of opinions, so our first step will be to agree on how we will set priorities.

**Choose initial scopes to work on**

The fun will begin when we apply our decision-making strategy to determine where we will start our work!

**Determine types of solutions needed**

Beyond just the scopes, we also have to decide on the type of solution we are striving for: will it be a standard, guidelines, a decision-making tool or something else? In order to be effective, the solution must be one that will be adopted at scale by the industry, so broad stakeholder input and early buy-in is essential.

**Formalize IWG**

All of the above steps will give us the Terms of Reference to move forward with the project. Based on this, we will choose our final Steering Committee, Technical Committee and Advisory Group members.

**Develop work plan and budget**

We will use Terms of Reference to develop the initial work plan and budget for the project.

**Begin fundraising**

We will raise money to cover the costs of the project. As with our other work, financial support from stakeholders is important not only to cover costs, but to signal the industry commitment to the outcome.

**Start working!**

This is when we start to real work that will result in a solution that will recognize and drive best practices.